



**MINISTÈRE
DE L'INTÉRIEUR
ET DES OUTRE-MER**

*Liberté
Égalité
Fraternité*



Directorate-General for foreign nationals in France

DGEF

The Directorate-General for foreign nationals in France is responsible, within the Ministry of the Interior for the policy of immigration, asylum, integration and access to French citizenship.

August 2022

DIRECTORATE-GENERAL

FOR FOREIGN NATIONALS IN FRANCE (DGEF)

Created in 2003, the **Directorate-General for foreign nationals in France (DGEF)** is responsible, within the Ministry of the Interior for the policy of immigration, asylum, integration and access to French citizenship.

DGEF acts in fields that include the totality of the integration process of foreigners in France: entry on the territory, residence, work, fight against irregular immigration, asylum, integration, and naturalisation.

It is competent to manage:

- visa regulation,
- general rules related to the entry, residence, and work of the foreign nationals in France,
- fight against irregular immigration, illegal work, and document fraud,
- asylum,
- reception and support for newcomer foreigners,
- access to French citizenship, essentially by decree or by marriage.

DGEF implements the orientations set by the Minister, draws up statutory texts and manages the budget of the ministerial mission "Immigration, asylum and integration", which includes two programmes: 104 "Integration and access to French citizenship" and 303 "Immigration and asylum". It acts as a managing authority in France for the European "Asylum, Migration and Integration" (FAMI) and "Internal security" (FSI) funds.

In these different fields, DGEF acts on the international and European levels.

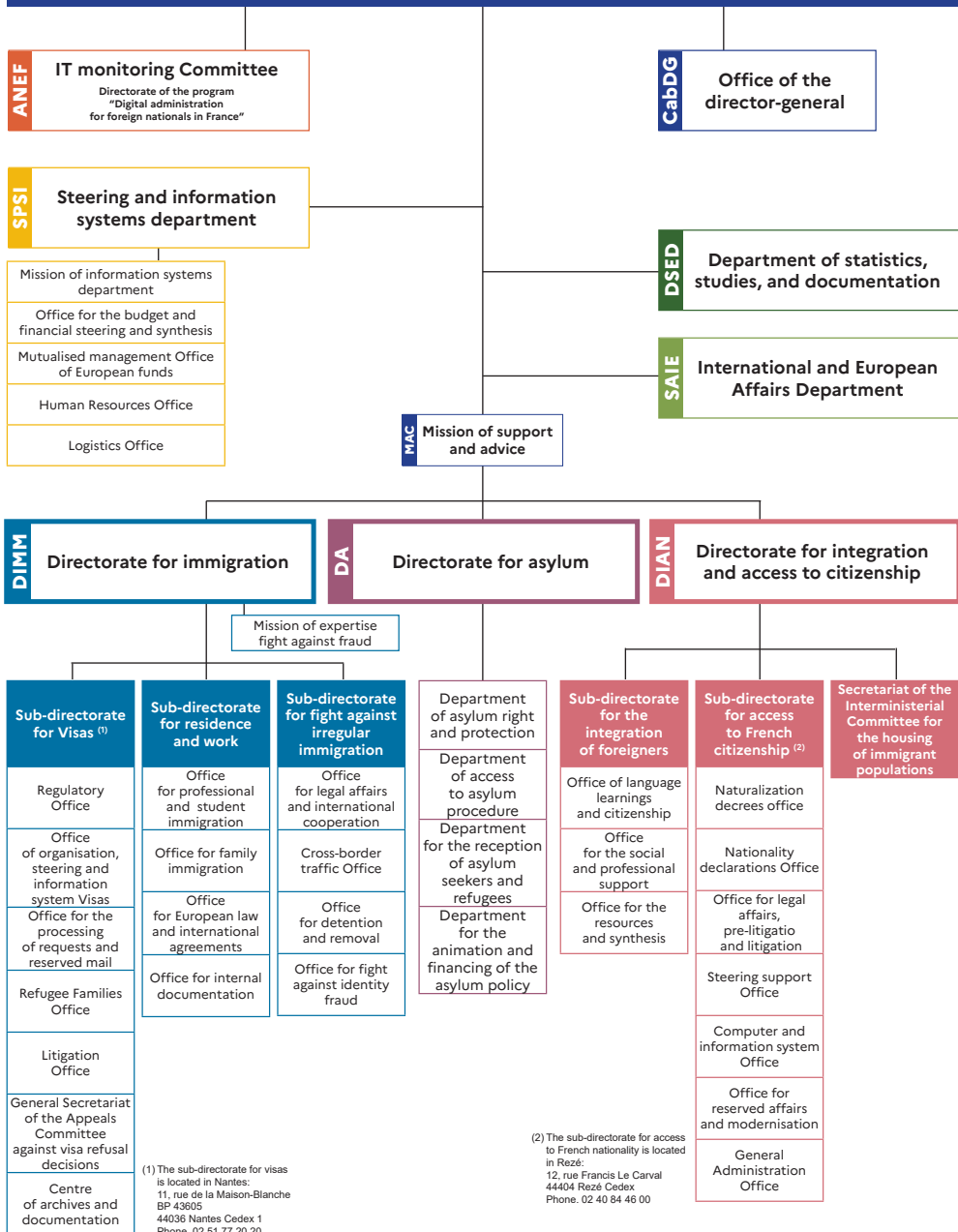
It acts in cooperation with other ministries (Justice, Europe and Foreign Affairs, Solidarities and Health, Work, Territory Cohesion) and interdepartmental structures (interdepartmental delegation for the reception and integration of refugees (DIAIR) and interdepartmental delegation for the housing and the access to housing (DIHAL)).

DGEF relies on two public operators:

- the French Office for the Protection of Refugees and Stateless People (OFPRA), in charge of the application of French texts and European and international conventions on the recognition of refugee statuses, stateless status and the admission to subsidiary protection;
- the French Office for Immigration and Integration (OFII), in charge of the reception and the support of the foreign nationals authorised to reside on a long permanently in France.

In order to succeed in its actions, DGEF is made up of 7 directorates and services that include in total nearby 600 agents in Paris and Loire-Atlantique, and relies on the prefecture network in France, and on the consular network abroad.

Director-General for Foreigners in France



The directorate for immigration (DIMM)

● **The directorate for immigration** oversees the conception of the public policies regarding the entry, residence, work of the foreign nationals and the fight against irregular immigration.

In partnership with the Ministry of Europe and Foreign Affairs, DIMM elaborates the visa regulations and oversees the consular services in charge for processing visa applications.

It develops the regulation regarding the entry and residence of foreigners, and the work authorisation. It also manages the border control, the expulsion of foreigners and fight against illegal labour and identity fraud.

It contributes to the drawing up and negotiations of the European standards, and the negotiation of bilateral agreements on migration.

It has three sub-directorates:

- **the sub-directorate for visas** applies the policy of visas and ensures its implementation via the French consular network. It is involved in a wide movement of modernisation and simplification on behalf of users (France visas, biometric, and externalisation of visa applications);
- **the sub-directorate for residence and work** draws up rules on student, professional and family immigration, in a community framework that promotes free movement of EU nationals and the mobility of third country nationals. It contributes to the attractiveness of the national territory for talents and participates in the negotiation of bilateral agreements on young, student and professional mobility;

- **the sub-directorate for the fight against irregular immigration** draws up and implements the European and national legal framework applicable to the cross-border movement, the expulsion of illegally staying foreign nationals, and fight against illegal labour and identity fraud.

These two sub-directorates rely on prefecture network, police, gendarmerie, and customs services. They closely collaborate with the French Ministry of labour and the French Office for Immigration and Integration (OFII).

The directorate of immigration ensures the management of the expert mission to fight against frauds (MELUF), which is cross-disciplinary for the entire DGEF.



www.immigration.interieur.gouv.fr

The directorate of integration and access to citizenship (DIAN)

The directorate for integration and access to citizenship is in charge of designing and implementing the public policy of integration of new foreigners in France and access to French citizenship.

Two sub-directorates implement this public policy:

- **the sub-directorate for the integration of foreigners** elaborates and implements the integration policy of foreigners authorised for the first time to reside in France and who wish to settle there permanently. It ensures the designing, the management and coordination of the republican integration programme. For this, it relies on a distributed network of State services and calls upon institutional, economic, and non-profit players in order to ensure the implementation of the integration policy of new foreigners;
- **the sub-directorate for access to French citizenship** elaborates and implements the rules on acquisition and loss of citizenship for the procedures within the scope of the Ministry of the Interior, i.e., the naturalisations by decree and the declarations by marriage, ascendant or brother and

sister of French national. It organises the management and the control of these procedures of acquisition of French citizenship by decree or by declaration. It ensures the animation, formation and coordination of the prefecture network and the interdepartmental platforms of citizenship.

The secretariat for the interministerial commission for the accommodation of immigrant populations (CILPI) is under the functional authority of the interministerial delegate for the accommodation and access to housing (DIHAL). The secretary of the CILPI follows the actions for the housing of immigrants and particularly the plan of the housing treatment of the migrant workers (PTFTM).



www.immigration.interieur.gouv.fr

The department of statistics, studies and documentation (DSED)

The department of statistics, studies and documentation ensures the collect, analysis and broadcast of statistical data on public policy of the directorate-general.

It is associated to the collection and analysis of data related to the population.

In accordance with the European statistics code of practice, this ministerial statistic service draws up a calendar of the publication of the annual data on migration flows and asylum.



www.immigration.interieur.gouv.fr

The directorate for asylum (DA)

The directorate for asylum oversees the issues on the policy of asylum and reception of the people benefiting from international protection. It draws up the regulation related to these issues, designs and implements the dispositions on the reception, the accommodation, and the opening of the rights of asylum seekers and refugees. It ensures, in relation with the ministerial services concerned, the elaboration and implementation of the asylum policy at the European and international level. Four departments incorporate this directorate:

- **the department for asylum right and protection** draws up and follows-up the legislation on asylum, particularly from the European standards. It participates in the negotiations and in the works directed in the framework of the European Union in the field of asylum. It is in charge of the access to the asylum procedure of the external dimension of asylum (resettlement, special operations of reception);
- **the department for access to the asylum procedure** oversees the implementation and application of the European regulation of Dublin and Eurodac. In this framework, its interlocutors are nationals (prefectures in charge of the residence authorisation of the asylum seekers) and Europeans (Member State of European Union responsible for each asylum application). It also implements the investigative procedure of the frontier asylum applications;
- **the department for the reception of asylum seekers and refugees** manages the national reception and accommodation device of the asylum seekers, that counts almost 90,000 places. It finances the actions for the integration of the refugees;
- **the department for the animation and the financing of the asylum policy** manages national and European loans involved in the financing of the reception policy of the asylum seekers and the refugee support. It oversees the cross-disciplinary management of the asylum policy, so as to reduce delays.



www.immigration.interieur.gouv.fr

Steering and information systems department (SPSI)

The steering and information systems department, made up of a department and four offices, ensures all support missions for the directorates and services of DGEF:

- the steering and the consistency of the information and application systems of DGEF;
- the preparation, management of the budget, the internal inspection, performance of the financial implementation and the OFII trusteeship;
- the management of human resources;
- the logistic and centralisation of purchases;
- the common management of the finances "Asylum, migration and integration" (FAMI) and "Security of Interior" (FSI), of which the DGEF is the responsible authority.

The international and European affairs department (SAIE)

● The international and European affairs department embodies the international dimension of the migration policy managed by the Ministry of the Interior through DGEF. It participates, in relation with the ministerial services in question, to the elaboration and implementation of the different sides of the migratory diplomacy at the international and European levels.

● Regarding Europe, it coordinates DGEF's action, at a European level, with all directorates and services. It plays a key role in the development of DGEF's positions for the adoption of the migratory pact.

● Regarding international affairs, it monitors the relations and bilateral agreements, particularly the agreements of the concerted management of the migratory flows (AGCFM). It manages each activity regarding the migration issues in the international organisations.



www.immigration.interieur.gouv.fr

The directorate of the programme "Digital Administration for the Foreigners in France" IT monitoring committee

● The Digital Administration for foreign nationals in France (ANEF) is a programme whose purpose is the complete dematerialisation of all the foreigner process by 2022, namely: asylum, residence, and access to French nationality.

It is a question of a digital transformation that will concern 10 million of users and 10,000 agents of the Ministry of the Interior (prefectures, GUDA, naturalisation platforms, security force, etc.), and the foreign affairs of work, legal and association approved by the State.

The directorate of the ANEF programme is organised in integrated services within the DGEF, close to the directorates of the profession. ANEF develops lively the units of the portal that will concern, by 2013, all the professions of the DGEF (ex: naturalisation, student residence permits, etc.).

The IT monitoring committee ensures the tracking of the big modernisation programme of the information systems involving DGEF: the programme "France Visa" that enables like the ANEF the complete dematerialisation (user - consulate agent), in partnership with the Ministry of Europe and of Foreign Affairs; the programme "Safety and fluid borders" (PFSF), managed by the DNUM, the new systems of European information (EES and ETIAS) that will modernise the access to the Schengen area by 2022.

The operators

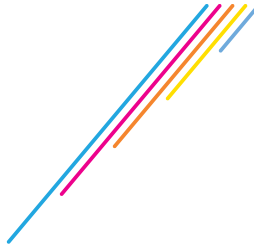
DGEF ensures the trusteeship of two public institutions that implement the established policy:

The logo for OFPRA, featuring the acronym in white on a dark blue rectangular background.

the French Office for the Protection of Refugees and Stateless People (OFPRA) oversees the application of French texts and the European and international agreements on the recognition of refugee status, stateless status and the admission to a subsidiary protection;



the French Office for Immigration and Integration (OFII) oversees the reception and support of the foreign nationals authorised to stay in France permanently. It oversees the linguistic training and the civic training dispensed to the signers of republican integration contract.



MINISTÈRE DE L'INTÉRIEUR ET DES OUTRE-MER
Direction générale des étrangers en France

<https://www.interieur.gouv.fr>
<https://www.immigration.interieur.gouv.fr>

Place Beauvau 75800 PARIS CEDEX 08
Tél. 01 49 27 49 27